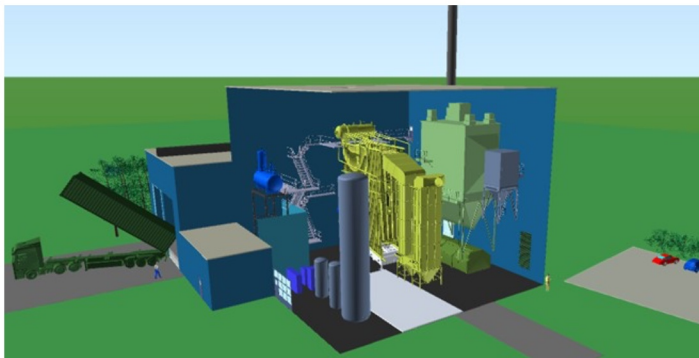




# DELTA 10, 12,5 & 15MW

## COMPACT & EFFICIENT BIOMASS STEAM POWER

The Delta model is our largest prefabricated biomass steam boiler system, which reduces costs, increases efficiency and offers maximum operational safety for a reliable energy supply. Despite standardisation, it remains flexibly adaptable to your individual requirements.



### KEY FEATURES

- ✓ **Performance:** 10, 12.5 or 15 MW (Steam, Electricity & Heat)
- ✓ **Efficiency:** 94% Wirkungsgrad
- ✓ **Steam Parameters:** 310-500 °C | 60 to 100 bar pressure | 11-22,5 t/h
- ✓ **Electrical Output:** 1,4 - 2,1 MW/h
- ✓ **Comprehensive Package:** Includes fuel handling, boiler technology, turbine, filter, water treatment, safety systems & SCADA control



### BIOMASS FUEL

Our steam boiler system can utilise many different types of biomass. From wood chips & pellets to straw, wood waste & olive stones. Moist fuels with up to 50% moisture are also possible.

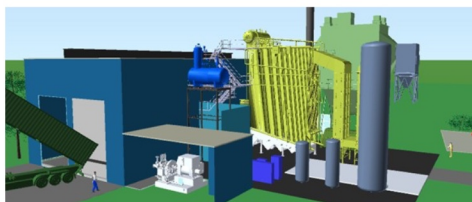
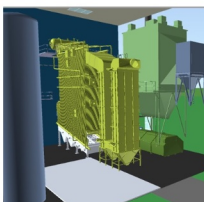
### PLANT EXAMPLE

#### General Information

Boiler Output	15 MW
Plant Efficiency	94%
Biomass	Wood chips
Pressure	60 or 100 Bara
Superheat Temperature	max. 500°C

#### Boiler Production Steam

Pressure	8 bara
Steam Production	22.585 kg/h



### ABOUT US

At Focus BioEnergy, we offer customised energy solutions that replace fossil fuels with CO<sub>2</sub>-neutral biomass. Our advanced steam technology increases operational efficiency and enables reliable electricity and heat generation.

We have been in the Danish district heating and processing industry for over 30 years, always emphasising close cooperation and comprehensive advice.

**Question? Want to find out more?**  
**Visit us at [www.focusbioenergy.com](http://www.focusbioenergy.com)**  
**- or contact us directly!**

**Jens-Ole Jensen**   
**CEO - Managing Director**  
**[joj@focusbioenergy.de](mailto:joj@focusbioenergy.de)**  
**+45 60 54 44 17**