

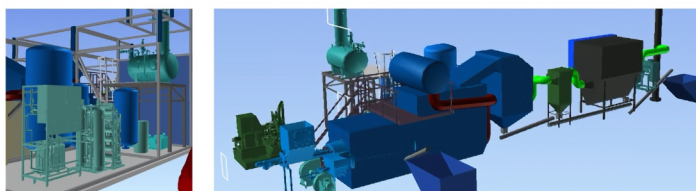
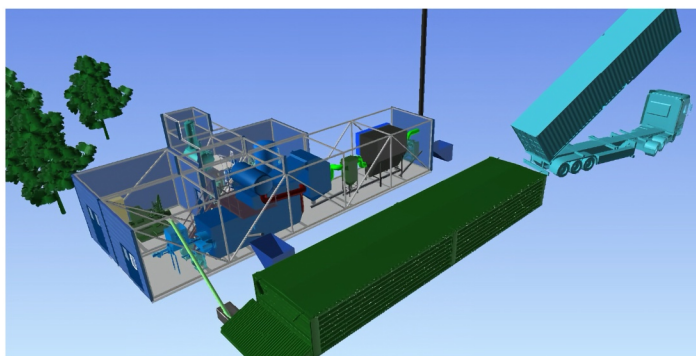


# ALPHA 1MW & 2MW

## COMPACT & EFFICIENT

## BIOMASS STEAM POWER

The Alpha model is a prefabricated biomass-fired steam boiler plant. Thanks to pre-installed components, installation time is minimised. The boiler can be customised flexibly and supplies steam, steam and electricity or heat and electricity as required.



### KEY FEATURES

- ✓ **Performance:** 1,0-1,3MW & 2,0-2,6MW (Steam, Electricity & Heat)
- ✓ **Efficiency:** 92% efficiency rate
- ✓ **Steam Parameters:** 250-400 °C | up to 40 bar pressure | 1,5-3 t/h
- ✓ **Electrical Output:** 0,1 - 0,2 MW/h
- ✓ **Comprehensive Package:** Includes fuel handling, boiler technology, turbine, filter, water treatment, safety systems & SCADA control

### BIOMASS FUEL

Our steam boiler system can utilise many different types of biomass. From wood chips & pellets to straw, wood waste & olive stones. Moist fuels with up to 35% moisture are also possible.

### PLANT EXAMPLE

#### General Information

Boiler Output	up to 2,6 MW
Plant Efficiency	92%
Biomass	Wood chips
Pressure	40 bara
Superheat Temperature	max. 400°C

#### Boiler Production Steam

Pressure	8 bara
Steam Production	3.800 kg/h

### ABOUT US

At Focus BioEnergy, we offer customised energy solutions that replace fossil fuels with CO<sub>2</sub>-neutral biomass. Our advanced steam technology increases operational efficiency and enables reliable electricity and heat generation.

We have been in the Danish district heating and processing industry for over 30 years, always emphasising close cooperation and comprehensive advice.

**Question? Want to find out more?**  
**Visit us at [www.focusbioenergy.com](http://www.focusbioenergy.com)**  
**- or contact us directly!**

**Jens-Ole Jensen**   
**CEO - Managing Director**  
**[joj@focusbioenergy.de](mailto:joj@focusbioenergy.de)**  
**+45 60 54 44 17**